

Table of Content

- [1. Download and install](#)
- [2. Setup Project](#)
 - [2.1 Add a Service](#)
- [3. Configuration Manager:](#)
- [4. Build the solution:](#)

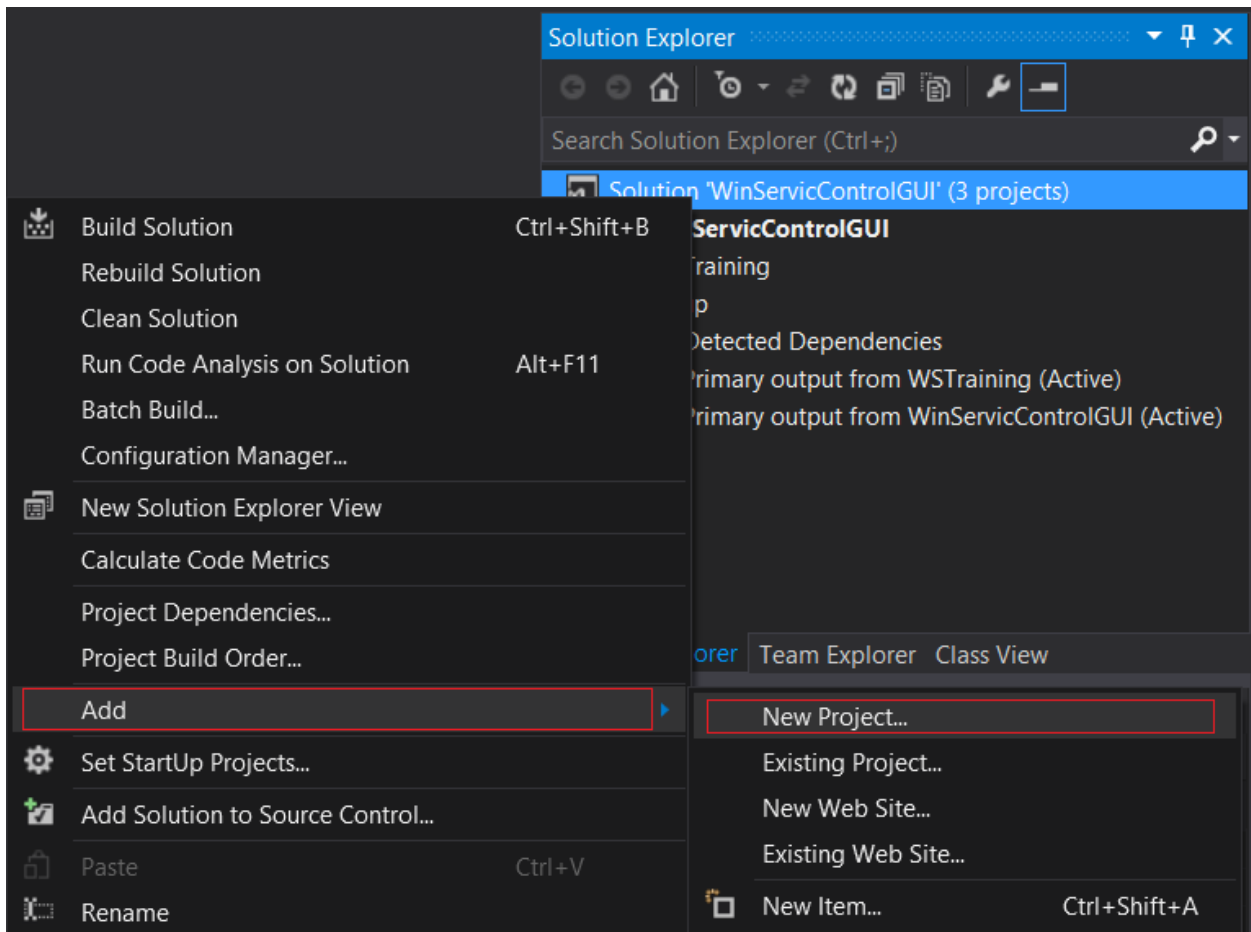
Setup project in VS2013

1. Download and install

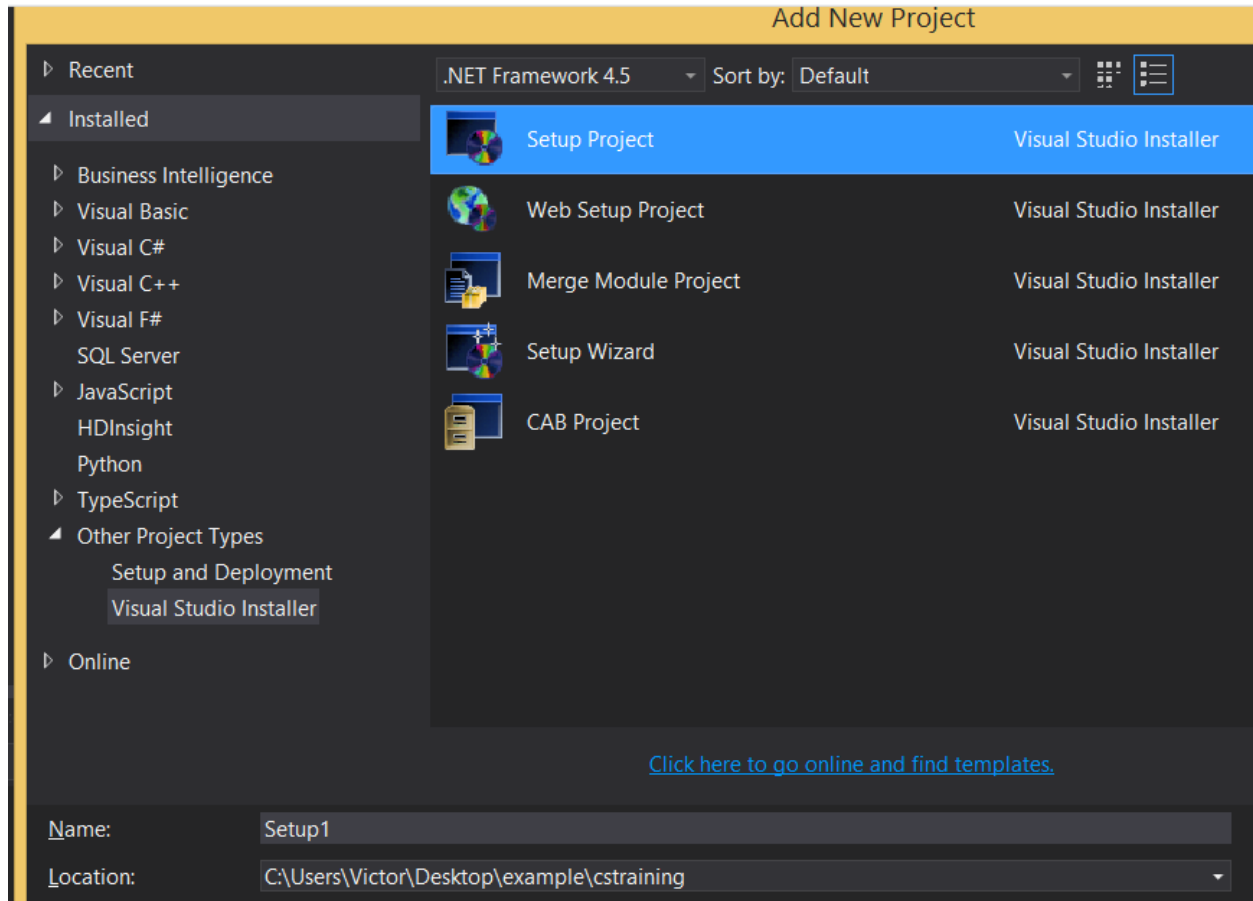
Download and install Microsoft Visual Studio Installer Projects extension from [here](#).

2. Setup Project

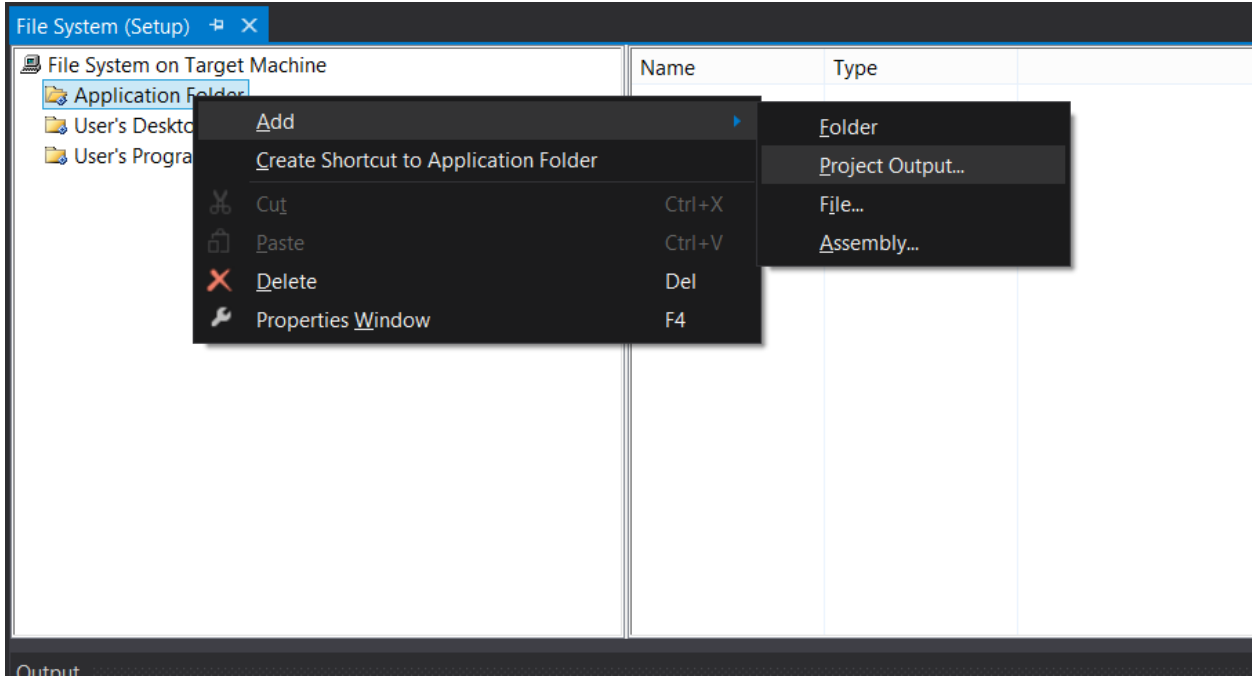
- a. After you open a project we want to make a setup file for it, we should add a new setup project to our solution, in my case i have two projects for which i would like to make a setup file WinServiceControlGUI and WSTraining (the service itself):



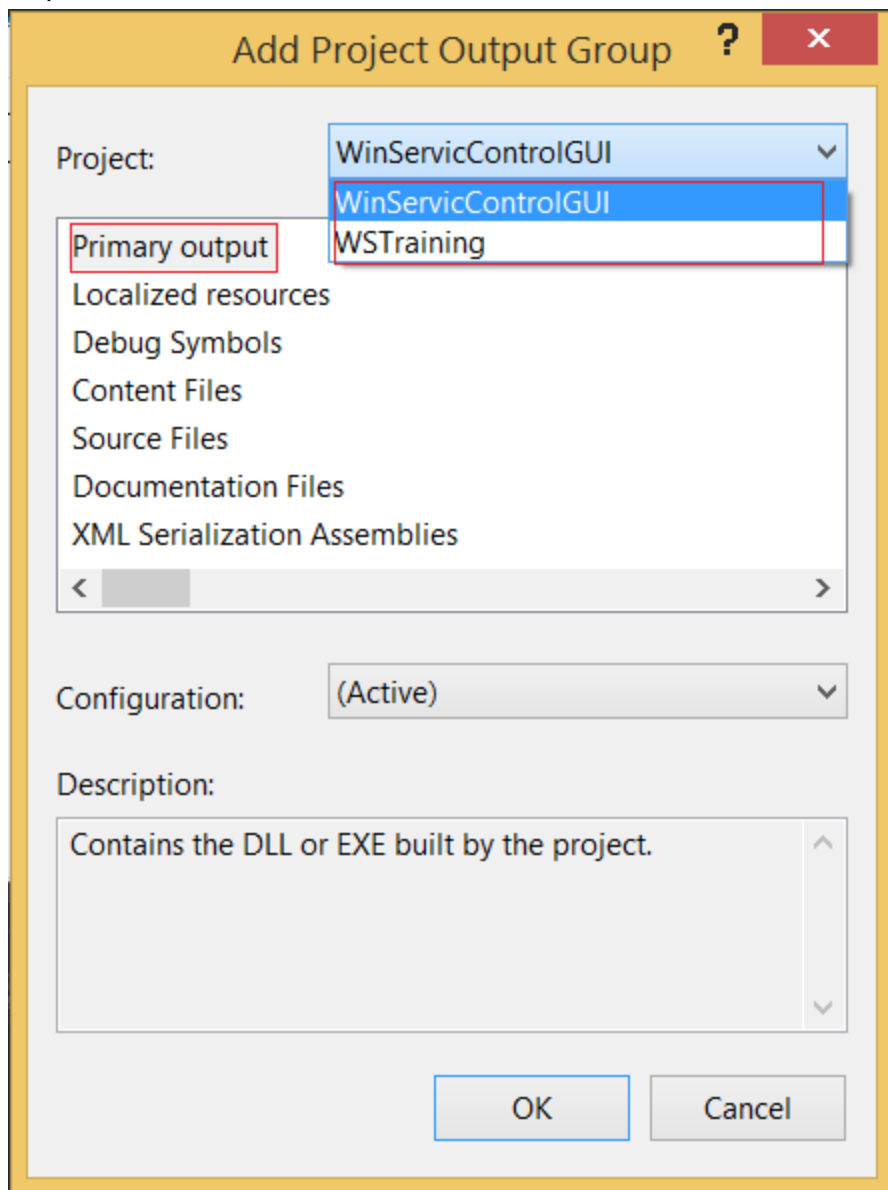
b. In the Add New Project window under Other Project Types => Visual Studio Installer choose Setup Project:



c. In the File System (Setup) right click on Application Folder=>Add=>Project Output



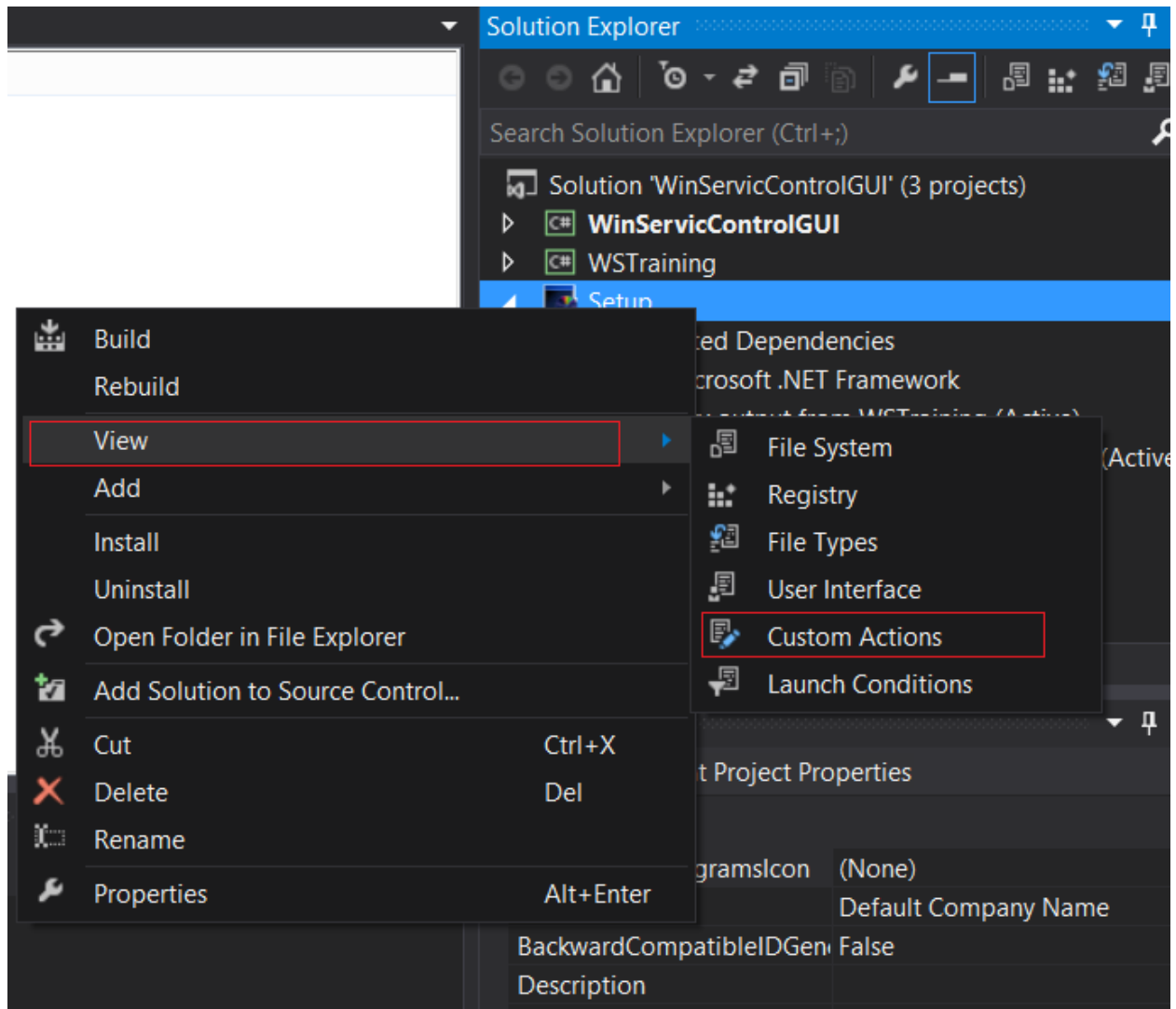
d. In Add Project Output Group window in ComboBox choose the project for which you would like the project output to be packaged, in my case i would like to add two primary outputs, one for WinServiceControlGUI and another one for WSTraining:



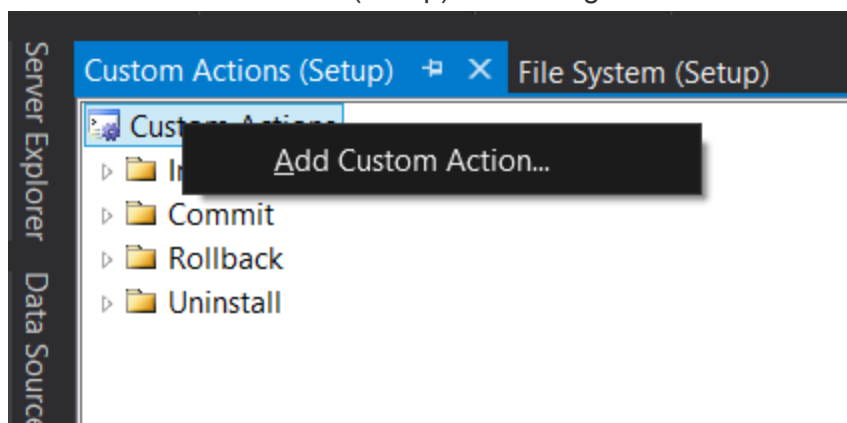
e. Upon clicking OK, the installer picks up all the dependencies and adds it into the dependencies folder for you, a 'Primary output from <project name> (configuration)' also gets created. You can select properties on this file to specify meta data on the installer.

2.1 Add a Service

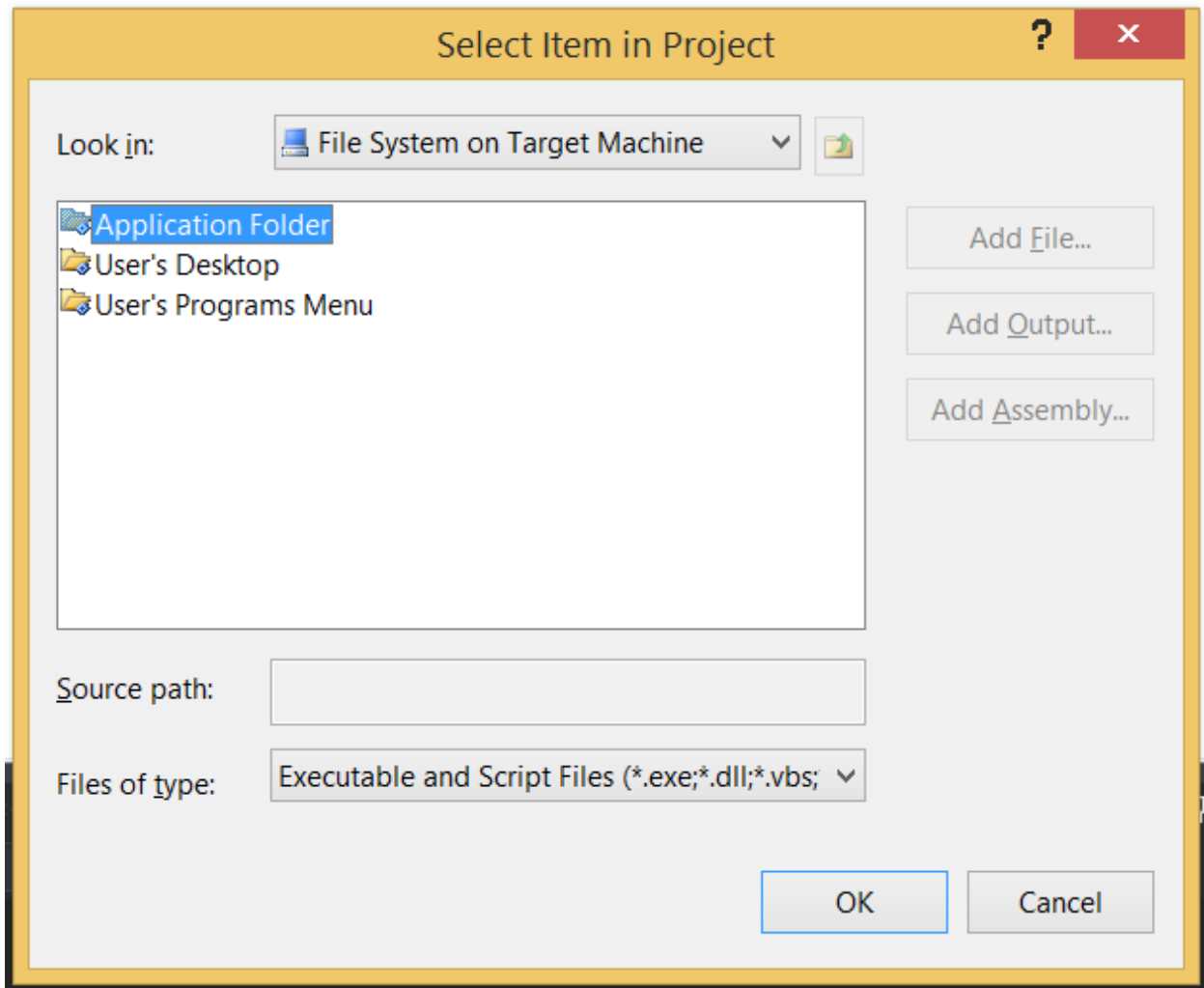
In my case after setup is finished i would like that the service will be installed, so i should to choose Custom Actions for my Setup. Right click setup project => View => Custom Actions:



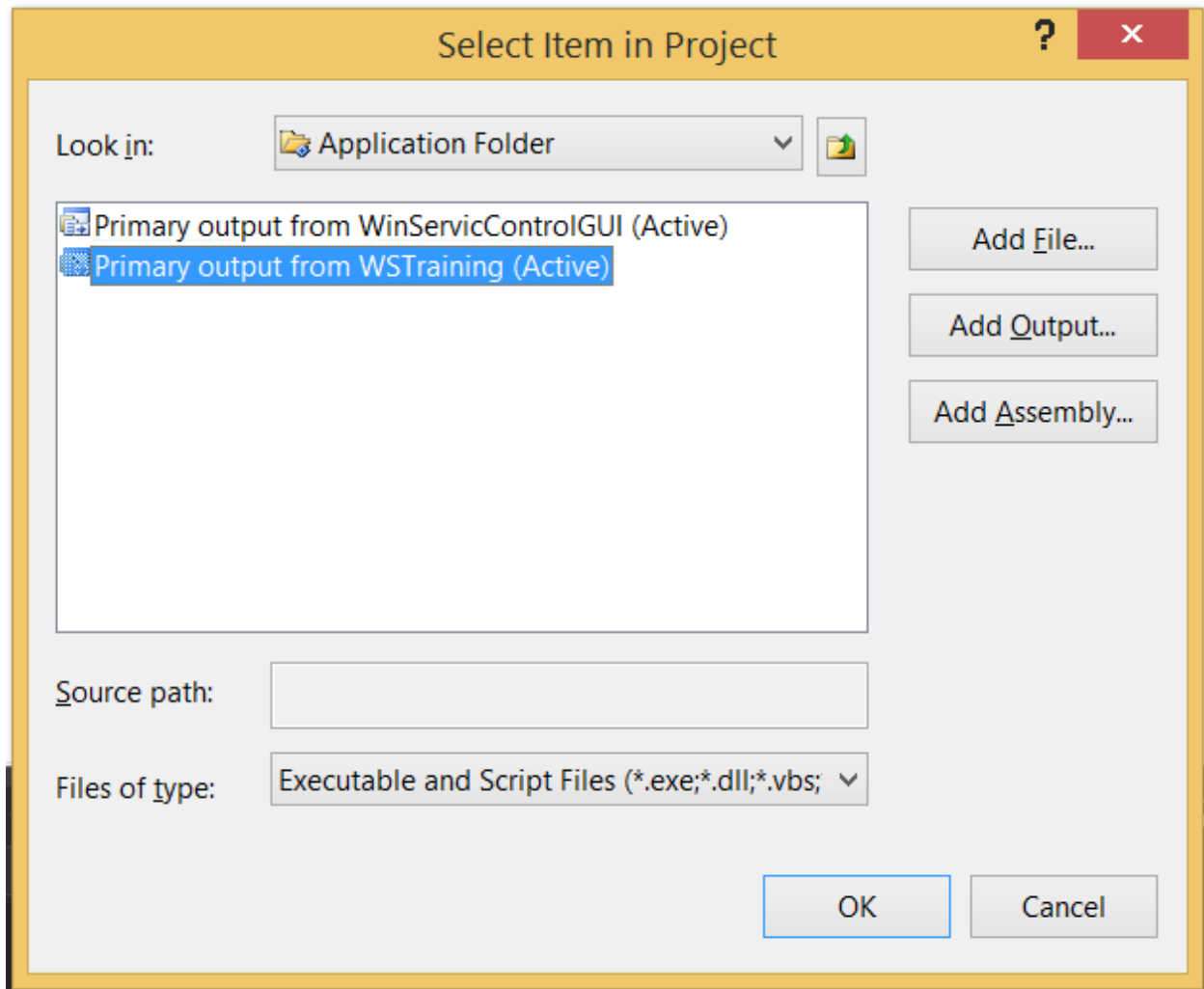
- a. In Custom Actions (Setup) window right click on Custom Actions => Add custom action



b. Double click on Application folder



c. You will see the Primary Outputs which we added before



d. I would like to choose the Primary output from WSTraining in order to install the service.

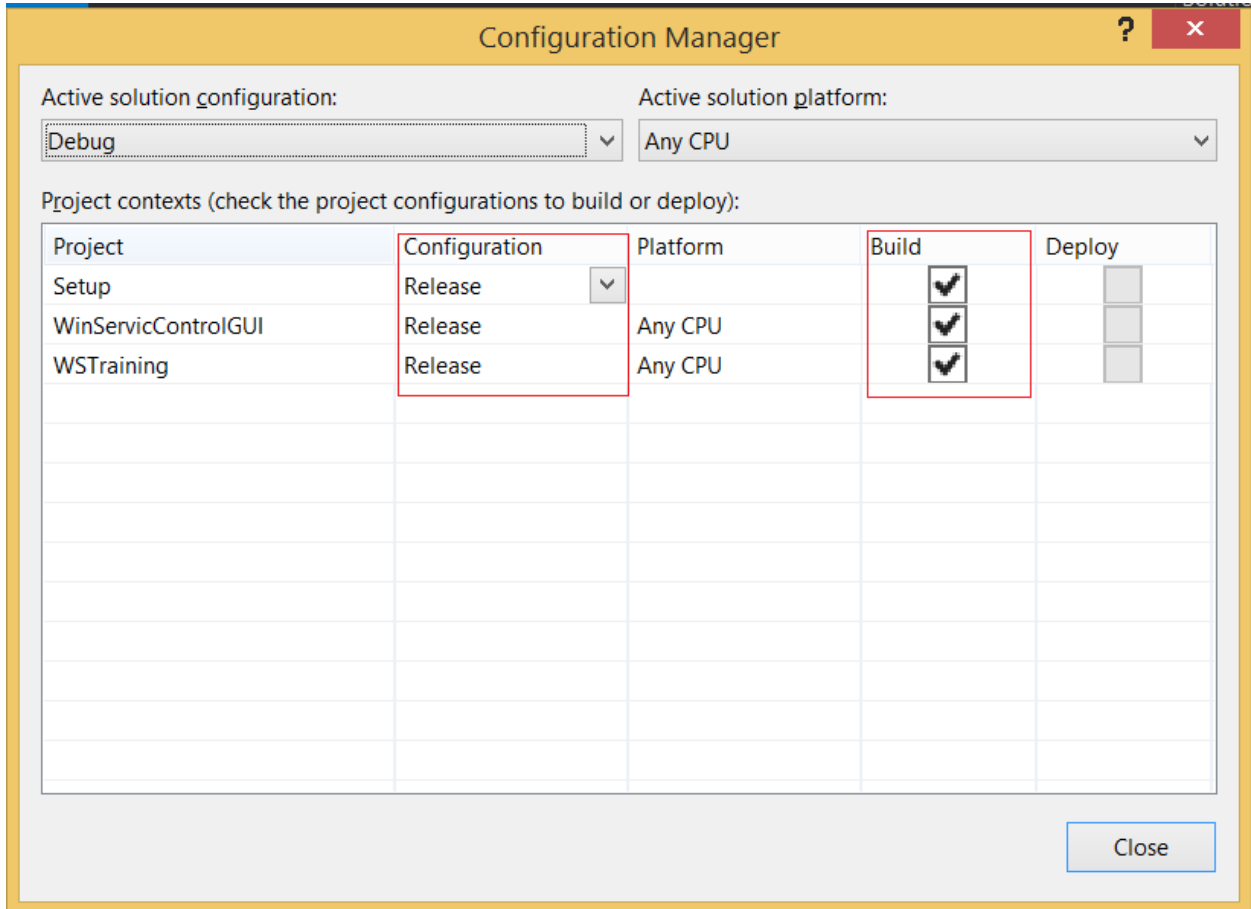
e. Upon clicking OK, the installer adds the Primary output i chose, to Install, Commit, Rollback and Uninstall folders.

3. Configuration Manager:

a. Now go to configuration manager: Build => Configuration Manager

b. In the Configuration Manager dialog, in Configuration select Release option.

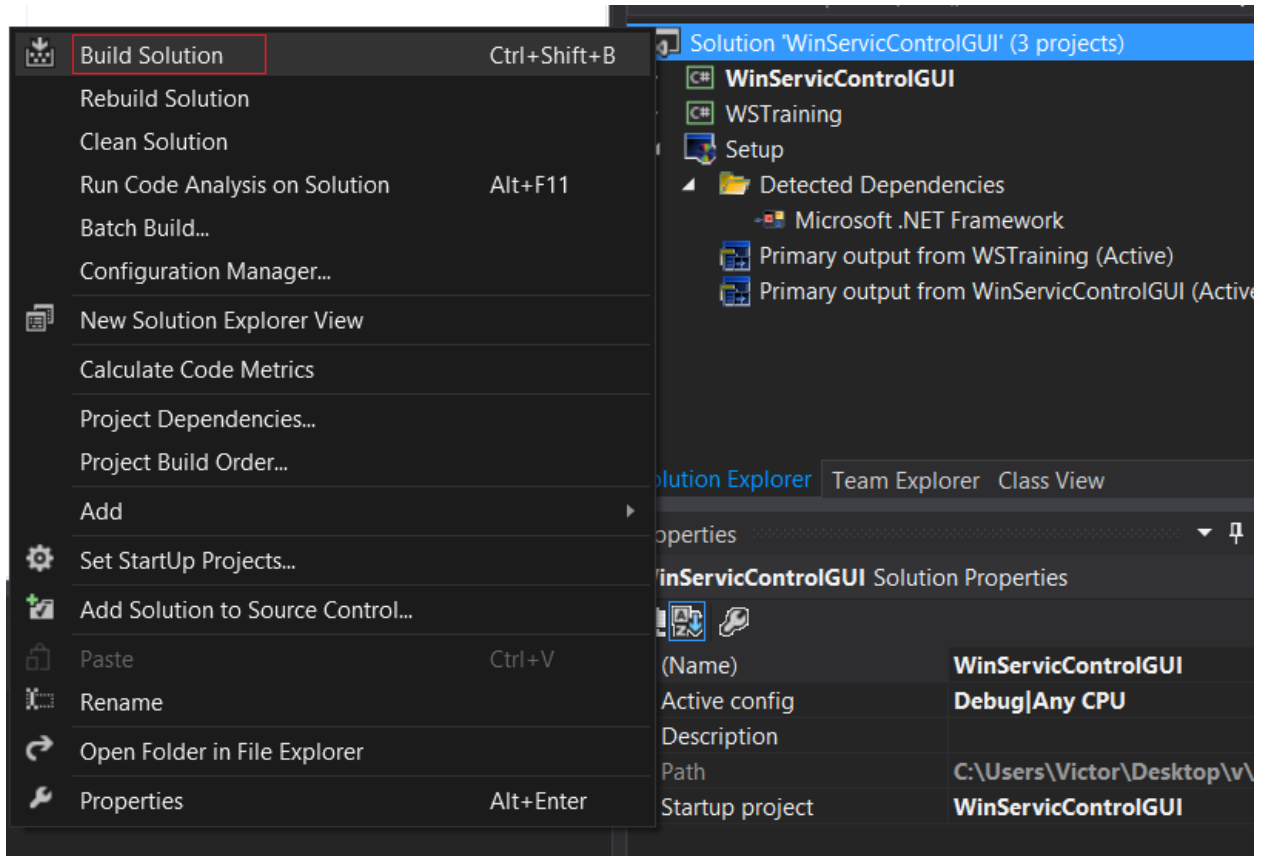
c. Make sure the Build checkboxes are checked for all projects.



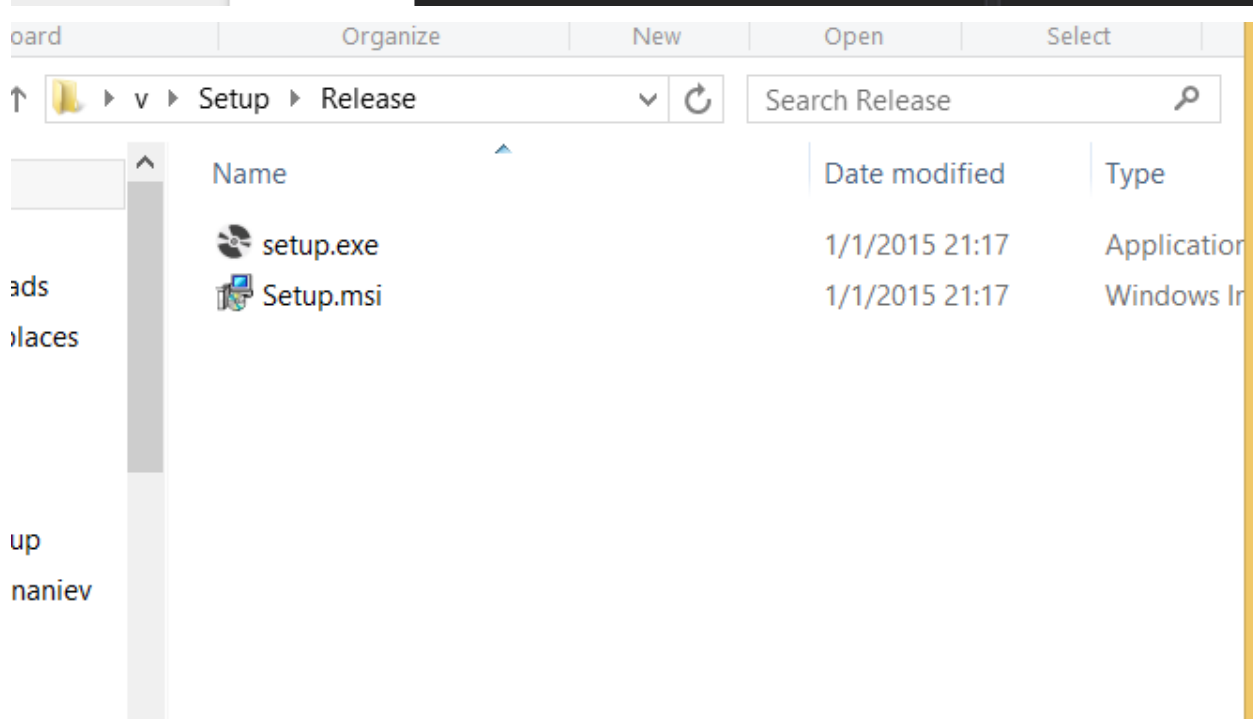
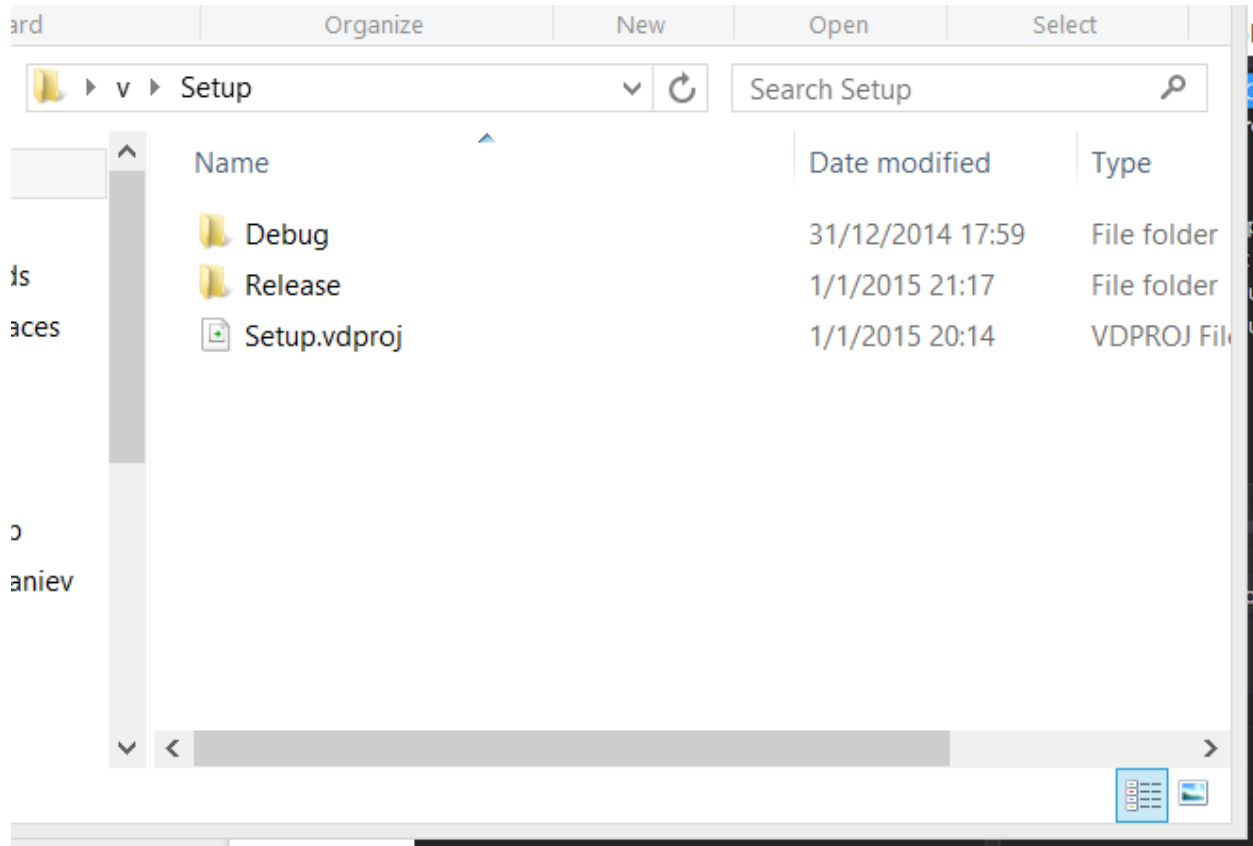
d. Click Close to close the Configuration Manager dialog.

4. Build the solution:

- a. Right click your solution and in opened menu click Build Solution.



b. After build finishes, Setup folder with released setup and .msi files in the Release folder will be created.



c. That's all, our installation package is ready.