

# BroadLink

## BroadLink e-Touch Smart wall light switch TC 2

User Manual

### Download APP

Method 1:



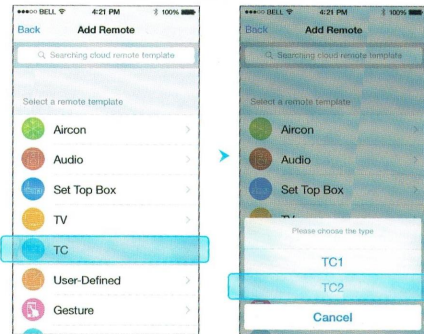
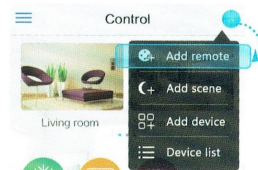
Scan the QR code from the packing box or the user manual to download e-Control.

Method 2:



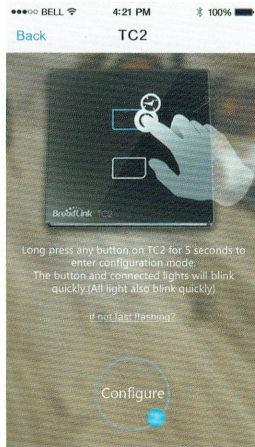
Visit [www.ibroadlink.com](http://www.ibroadlink.com) using your mobile browser, and tap Download APP on the page above.

### Step 1



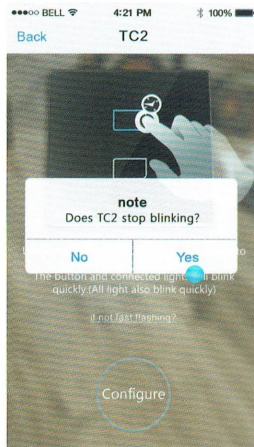
Open e-Control APP and turn to the config page as shown above.

## Step 2



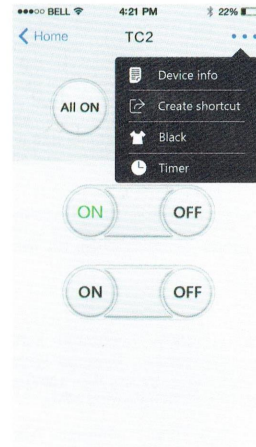
Please ensure TC2 and RM pro are within 5 meters, then press "Next step" on the config page. Long press (about 5s) touch button of TC2 until the blue boarder of button blinks. Then tap "Configure" and choose the type (gang) of TC2.

## Step 3



When blue boarder stops blinking, it means configuration is successful. Then tap "OK" to enter the operation page of TC2.

## Step 4



### TC2 control panel

On this page, you can perform functions like On/Off, All On/All Off, local/remote control and so on.

## Introduction

The installation and wiring of TC2 smart wall light switch is same as other common wall switch. Before installation, the electricity should be cut off. Then connect wires according to the physical marks on TC2 and tidy wires to prevent short circuit caused by contact between wires. It is not allowed to short-circuit the load or connect live wire and neutral wire to the same wiring terminal to avoid short circuit.

### Note

1. The distance between two smart wall switches should be more than 1 meter, or it may impact the control distance.
2. To achieve remote control function, TC2 needs to work with RM pro.

**US** Power Supply : 110-150V    Wattage : 5-200W/gang  
Power Supply : 170-240V    Wattage : 5-200W/gang  
Note : Power load should be less than 100W/gang if it is used for LED or energy saving light.

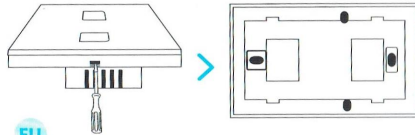
**EU** Power Supply : 170-240V    Wattage : 7-200W/gang  
Note : Power load should be less than 100W/gang if it is used for LED or energy saving light.

**UK** Power Supply : 170-240V    Wattage : 5-200W/gang  
Note : Power load should be less than 100W/gang if it is used for LED or energy saving light.

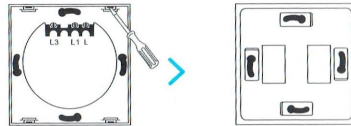
## Wiring installation

- 1 Remove the panel with screwdriver  
Tear down the front panel as figure below.

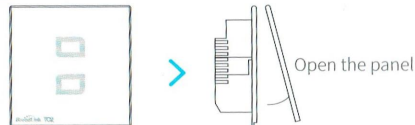
US



EU



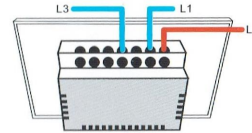
UK



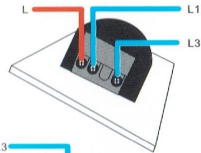
## Wiring installation

- 2 Connect the wires
  - Connect live wire to L terminal.
  - Connect neutral wire of light to light terminal (L2, L3, etc).

US

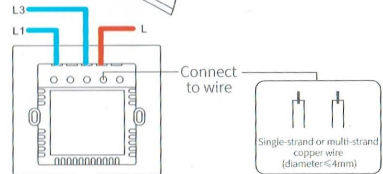


EU



Note:  
Live wire should connect to L terminal.

UK

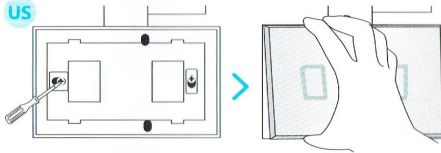


## Wiring installation

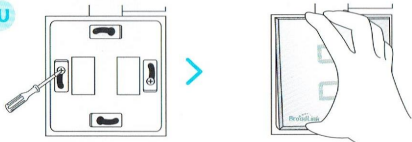
### 3 Install switch on the wall

- Place the switch on the wall
- Screw the both sides
- Install the front panel
- Installation completes

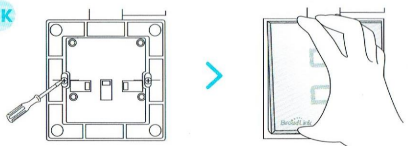
US



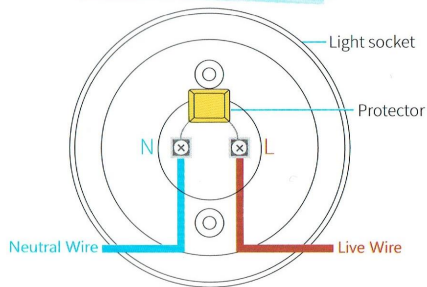
EU



UK



## Parallel protector



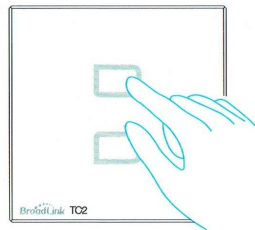
### Parallel Protector installation:

If light gleam or blink, please parallel the capacitor between live wiring terminal and neutral wiring terminal as the figure above.

### Note

DO NOT overload. If an overload occurs, lights will be turned off automatically. And after about 5mins, lights can work normally. Under this circumstance, please check the load power and replace with a light with appropriate power rating.

## Code learning and cleanup



### TC2 remote code learning setting:

Long press any button of TC2 for about 5s to enter code learning mode. Indicator lights of all buttons on TC2 blink rapidly and all the lights connecting to TC2 are on.

### TC2 remote code cleanup setting:

Long press any button of TC2 for more than 10s to enter code cleanup mode. Indicator lights of all buttons on TC2 are on and the lights connecting to TC2 are also on. Just tap any button on TC2 control panel to clean up all codes.